

How to Use Public Wireless Internet Access in Your Library

The following information provides very general instructions and guidance that can be used to connect portable devices to wireless networks that are available in Polk County Library Cooperative member libraries. A list of libraries that offer this service is provided below.

Please note the following:

- There are many types of portable network devices, and no two are alike. The differences in devices leads to differences in methods that are required to connect to wireless networks.
- We cannot provide instructions or support for individual types of devices or computers. If you experience problems connecting to networks in the libraries, we recommend that you contact the technical support organization for your equipment.
- The Lakeland and Winter Haven Public Libraries operate and maintain their own wireless networks. These instructions may be helpful when using the networks in those libraries. If not we recommend that you ask a staff member in the library for assistance.

Connecting to a Wireless Network

Each wireless network in the libraries have a Service Set Identifier (SSID) which is commonly called a network name. Table 1 lists the network names that the PCLC maintains in member libraries:

Library	Network Name
Auburndale Public Library	Auburndale_Library
Bartow Public Library	Bartow_Library
Dundee Public Library	Dundee_Library
Eagle Lake Public Library	Eagle_Lake_Library
Fort Meade Public Library	Fort_Meade_Public_Library
Latt Maxcy Memorial Library (Frostproof)	Latt_Maxcy_Memorial_Library
Haines City Public Library	Haines_City_Library
Lake Alfred Public Library	Lake_Alfred_Library
Lake Wales Public Library	Lake_Wales_Library
Mulberry Municipal Library	Mulberry_Library
Polk City Municipal Library	Polk_City_Library
Polk County Historical & Genealogical Library	Genealogical_Library
Polk County Law Library	Law_Library

Table 1

Your wireless device must discover or find the network based upon the name in use and then connect to that network. Again, the method used to connect to the network varies with each device.

Verify the Wireless Network Connection

If you are using a PC and it does not provide some indication that it has successfully connected to the

library's network, you can use one of the following methods to verify your connection.

- Check the Wireless Network Connection status by opening the “Network Connections” Window in the Windows Control Panel, and then double-clicking on the Wireless Network Connection (Figure 1).

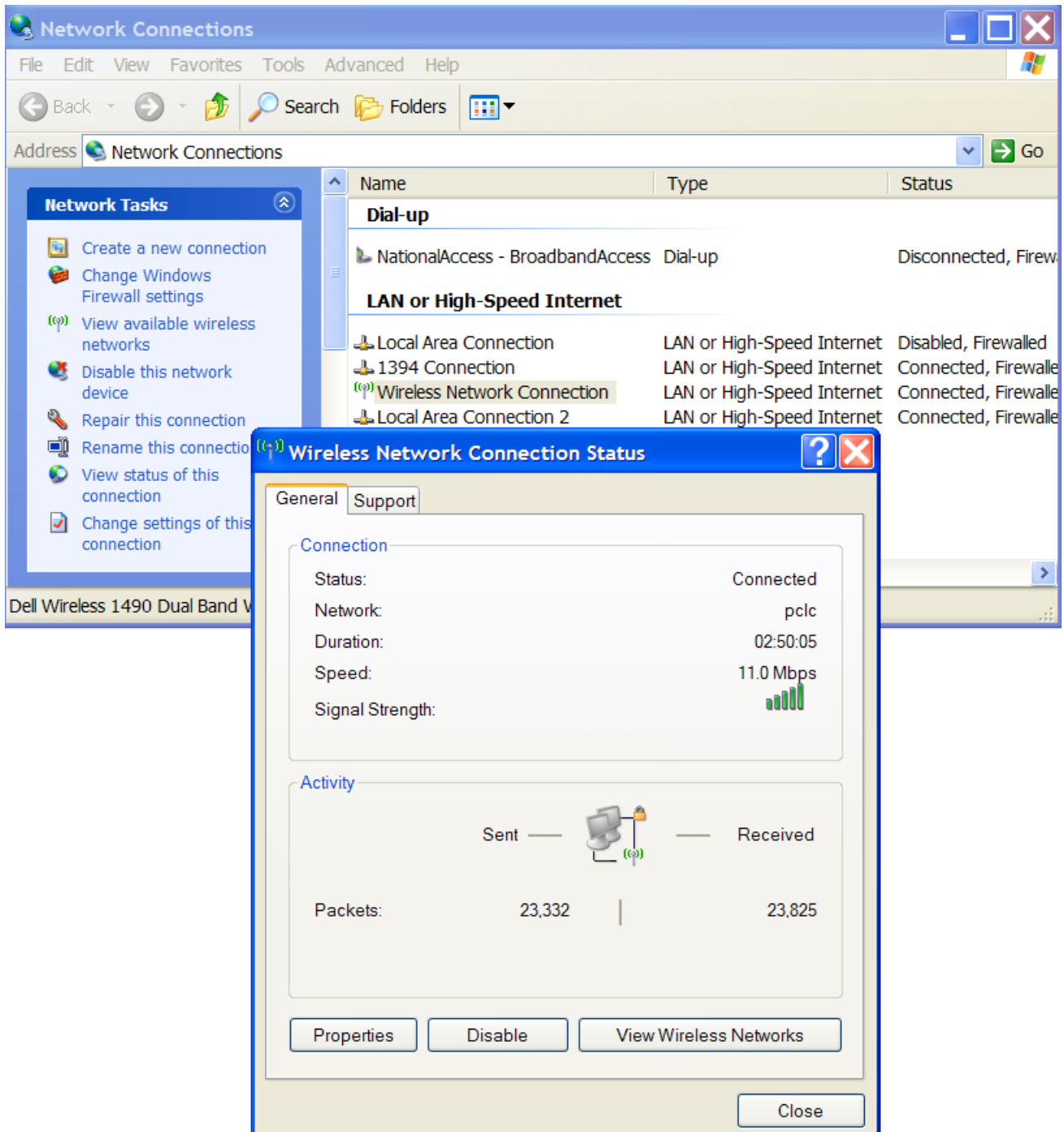


Figure 1

- Open a command window and run the **ipconfig** command (Figure 2) or the **ipconfig /all** command (Figure 3).

```
Command Prompt
Microsoft Windows XP [Version 5.1.2600]
(C) Copyright 1985-2001 Microsoft Corp.

C:\>ipconfig

Windows IP Configuration

Ethernet adapter Wireless Network Connection:

    Connection-specific DNS Suffix  . : mul.pclc.lib.fl.us
    IP Address. . . . . : 192.168.122.125
    Subnet Mask . . . . . : 255.255.255.0
    Default Gateway . . . . . : 192.168.122.3
```

Figure 2

```
Command Prompt

C:\>ipconfig /all

Windows IP Configuration

    Host Name . . . . . : Gaultier-Malde
    Primary Dns Suffix . . . . . : pclc.lib.fl.us
    Node Type . . . . . : Hybrid
    IP Routing Enabled. . . . . : No
    WINS Proxy Enabled. . . . . : No
    DNS Suffix Search List. . . . . : pclc.lib.fl.us
                                        mul.pclc.lib.fl.us
                                        lib.fl.us
                                        fl.us

Ethernet adapter Wireless Network Connection:

    Connection-specific DNS Suffix  . : mul.pclc.lib.fl.us
    Description . . . . . : Dell Wireless 1490 Dual Band WLAN Mini-Card
    Physical Address. . . . . : 00-19-7D-96-58-28
    Dhcp Enabled. . . . . : Yes
    Autoconfiguration Enabled . . . . . : Yes
    IP Address. . . . . : 192.168.122.125
    Subnet Mask . . . . . : 255.255.255.0
    Default Gateway . . . . . : 192.168.122.3
    DHCP Server . . . . . : 192.168.122.2
    DNS Servers . . . . . : 10.80.122.3
                                        68.238.112.12
                                        68.238.96.12
    Lease Obtained. . . . . : Friday, January 04, 2008 9:55:35 AM
    Lease Expires . . . . . : Friday, January 04, 2008 5:55:35 PM
```

Figure 3

The results of the **ipconfig** command will reveal the IP address and other network information regarding your wireless connection. An incorrect IP address or no IP address indicates a problem with the connection. Table 2 lists the first three parts of the IP address used by the libraries. The address provided for your connection should begin with the appropriate network numbers listed in the table.

Library	Network Address
Auburndale Public Library	192.168.113.____
Bartow Public Library	172.16.114.____
Dundee Public Library	192.168.115.____
Eagle Lake Public Library	192.168.116.____
Fort Meade Public Library	192.168.117.____
Latt Maxcy Memorial Library (Frostproof)	192.168.118.____
Haines City Public Library	192.168.119.____
Lake Alfred Public Library	192.168.120.____
Lake Wales Public Library	192.168.121.____
Mulberry Municipal Library	192.168.122.____
Polk City Municipal Library	192.168.123.____
Polk County Historical & Genealogical Library	192.168.125.____
Polk County Law Library	192.168.126.____

Table 2

Using the Wireless Network Connection

When you have confirmed that your device is connected to the wireless network you can access the Internet using any type of browser. Your browser will be redirected to a local server page that displays the library's Acceptable Use Policy. You must click the check box next to the statement "I have read and agree to the Acceptable Use Policy" and then click the button labeled "Continue" to gain access to the Internet (Figure 4).

Please note that Internet access is filtered on most of these networks, and that there is no provision to override the filtering system. Some, but not all libraries can provide unfiltered Internet access on one or more public access computers based on their local policies.

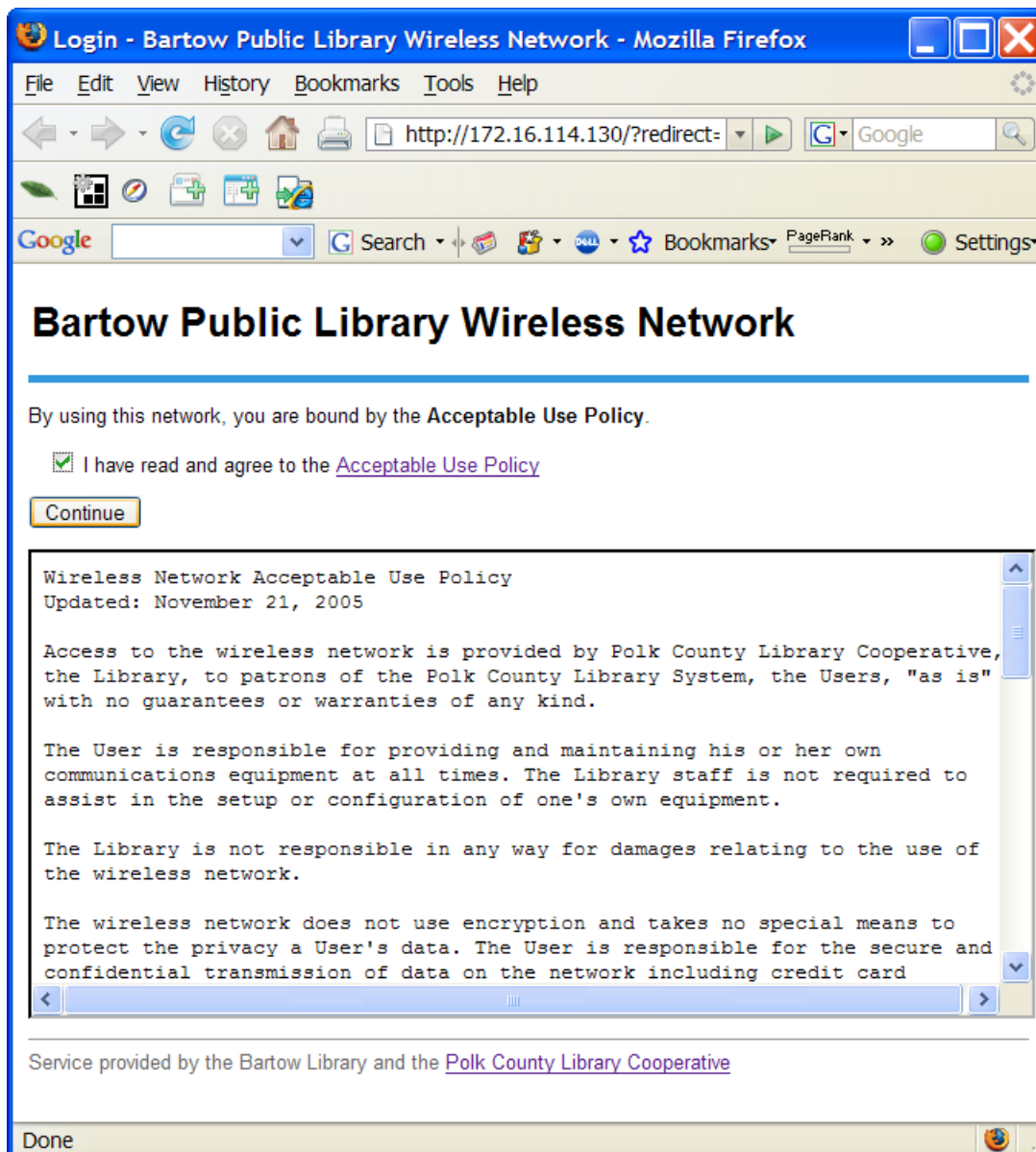


Figure 4